

**DN 15 - 50mm**  
**1/2" - 1.1/2"**

VA 80, VA 83, VA 85  
VA 86, VA 87, VA 89

**Application**

The basic line of ASCA needle valves was developed to guarantee perfect tightness in oil-dynamic systems in general. It is also applied to flow control, traps, multiple ways and pressure taking.  
For application in unusual fluids the valves will be supplied upon request.

**Specifications**

- Connection: ND 1/2", 3/4", 1", 1 1/2" and in the forms: weld socket or NPT or BSPT thread in compliance with MSS-SP84 / AISI B16.34 standards.

**Material of body:**

Basic line: carbon steel and stainless steel; both forged. (ASTM A 105 and AISI 316).  
Other materials upon request.

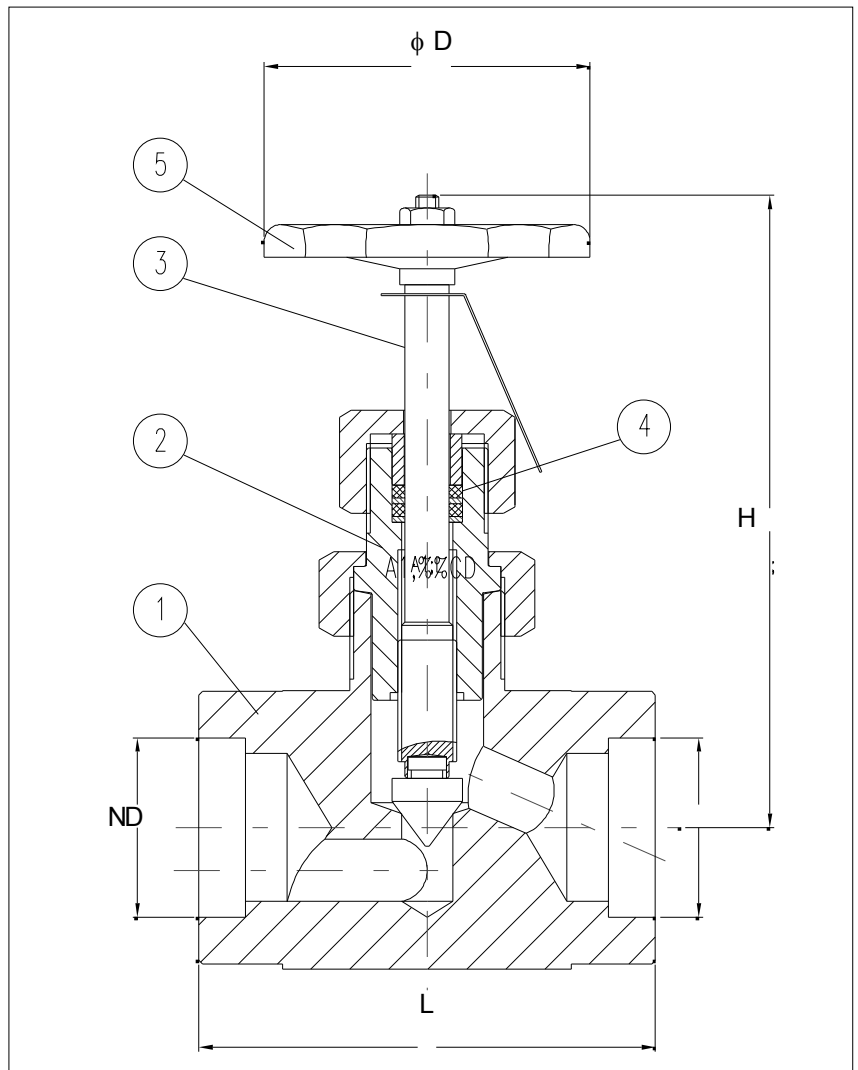
**Operating pressure:**

Up to 40,000 psi (2,800 bars) at 38°C (safety factor 4 – 1).

**Working temperature:**

Up to 400°C the set of gaskets being adjusted as follows:

- PTFE (Teflon) for temperatures up to 250°C
- Grafoil for temperatures up to 450°C



**Technical competence, materials and connections**

Model			VA 80	VA 83	VA 85	VA 86	VA 87	VA 89	
ND	mm			15	20	25	40		
	pol			1/2"	3/4"	1"	1.1/2"		
Maximum operating pressure			3000 e 5000 psi						
Nº	Description	Qty.	Specification						
Materials	1	Body	01	ASTMA-182 Gr. F53	ASTMA 105	ASTMA-182 Gr. F316	ASTMA-182 Gr. F316L	ASTMA-182 Gr. F321	ASTMA-182 Gr. F51
	2	Castle	01	ASTMA-182 Gr. F53	ASTMA 108 Gr. 1020	ASTMA-276 Gr. F316	ASTMA-276 Gr. F316L	ASTMA-182 Gr. F321	ASTMA-182 Gr. F51
	3	Stem / agula	01	ASTMA-182 Gr. F53	ASTMA 564 Gr. 630	ASTMA-276 Gr. F316	ASTMA-276 Gr. F316L	ASTMA-182 Gr. F321	ASTMA-182 Gr. F51
	4	Gasket	02	Teflon	Teflon	Teflon	Teflon	Teflon	Teflon
	5	Steering wheel	01	Aluminum SAE 329	Aluminum SAE 329	Aluminum SAE 329	Aluminum SAE 329	Aluminum SAE 329	Aluminum SAE 329

\*\* Recommended spare parts

## Constructive characteristics

- Positive sealing – all stems of basic line are made of stainless steel for maximum durability. The system of rotating tip guarantees perfect sealing without dragging over the seat, preventing the same from being damaged.
- Union-type castle – it guarantees maximum safety, preventing accidents in case of excessive torque upon closing or opening.

## basic dimensions (medium pressure line)

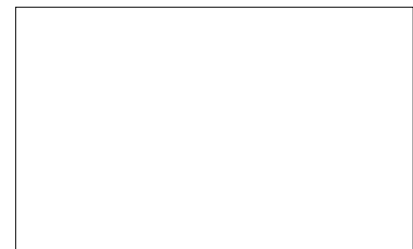
DN	1/2'	3/4"	1"	1.1/2"
φD	70	90	90	110
H	115	115	150	170
L	64	79	92	124

---

## ASCA EQUIPAMENTOS INDUSTRIAIS LTDA.

R. Fernandes da Cunha, 202- Vigário Geral - Rio de Janeiro - RJ - Brazil  
CEP 21241-300 - Tel.: (21) 2472-6900 - Fax (21) 3014-7622  
e-mail: office@asca.com.br - homepage: <http://www.asca.com.br>

SPECIFICATIONS SUBJECT TO CHANGE WITHOUT NOTICE.



Ask for certified print for exact dimensions