

**DIN PN 16 - 40** — **DN 15 to 100 mm**  
**ANSI 150 - 300** — **1/2" to 4"**

**GC 11, 31**

## Application

For controlling the condensate flow upstream of steam trap and the downstream of heat surfaces in steam systems.

## Main characteristics

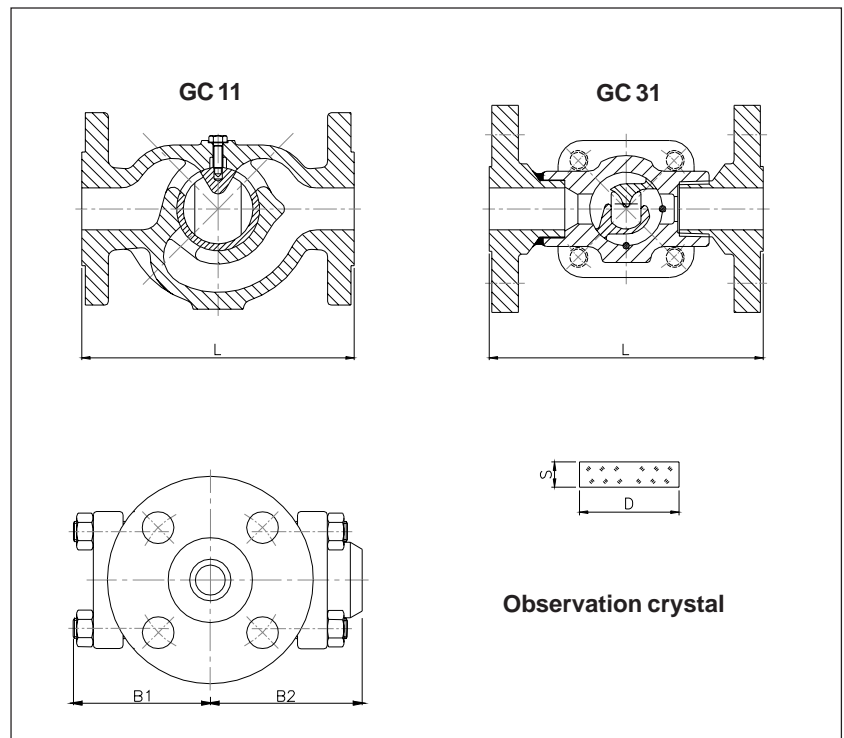
- Double window facilitates observation of the inside of the piping;
- Siphon with water stamp and rebord, propitiates clear differentiation between live steam and condensate;
- Absence of moving pieces;
- Minimum maintenance;
- Useful long life;
- Can be installed in horizontal or vertical position (With flow from up to down).

## Presentation

The GC 31 model has protection visor. They are basically composed of body, siphon, crystals and fixing flange of the crystals.

## Optionals

Mica discs for protection of the crystals, by means of price increase.



VISORS

## Technical competence, materials and connections

Model		GC 11				GC 31										
Normal pressure		DIN PN 16 - ANSI 150				DIN PN 40 - ANSI 300										
Nominal diameter	(mm)	15	20	25	40	50	65	80	100	15	20	25	40	50		
	(pol)	1/2"	3/4"	1"	1.1/2"	2"	2.1/2"	3"	4"	1/2"	3/4"	1"	1.1/2"	2"		
Max. service pressure (bar man.)		16				13					40					
Correspondent max. temperature (°C)		120				300					120					
Materials	1	Body				ASTMA 126 Gr B					ASTMA 216 WCB					
	2	Siphon				ASTMA 395					ASTMA 395					
	3	Conic ring				St 52					St 52					
	4	Fixation flange of the crystals				ASTMA 105		ASTMA 395			ASTMA 105		Chapa 1020			
	5	Gasket				Hidraulic cardboard					Hidraulic cardboard					
	6	Protection viewfinder				—					St 52					
	7	Crystals				Borosilicate					Borosilicate					
Connections	Thread / Weld		BSP / NPT				—					BSP / NPT / SW				
	Flange DIN		—				10 / 16					10 / 16 / 25 / 40				
	Flange ANSI		—				125					150 / 300				

## Installation

They can be installed in horizontal or vertical pipings, between heat exchanger and the steam trap. In the horizontal position, the flow direction is indifferent. If there is not wanted mounting position, the GC viewfinders are supplied for horizontal installation. To adapt the siphon to the vertical

position, consulte the "Instructions for maintenance and installation" that is together the device.

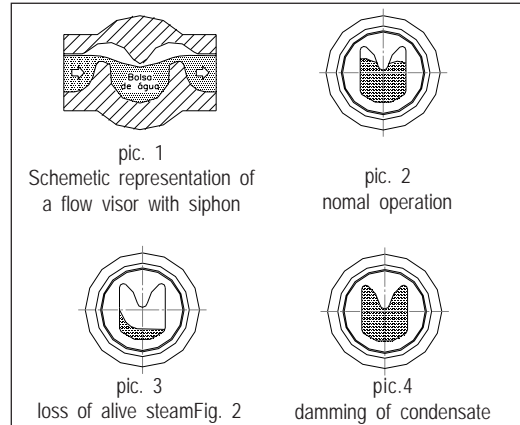
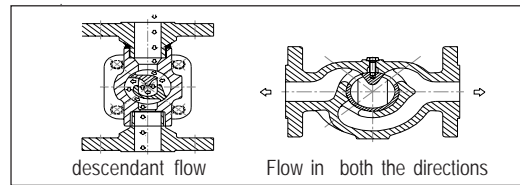
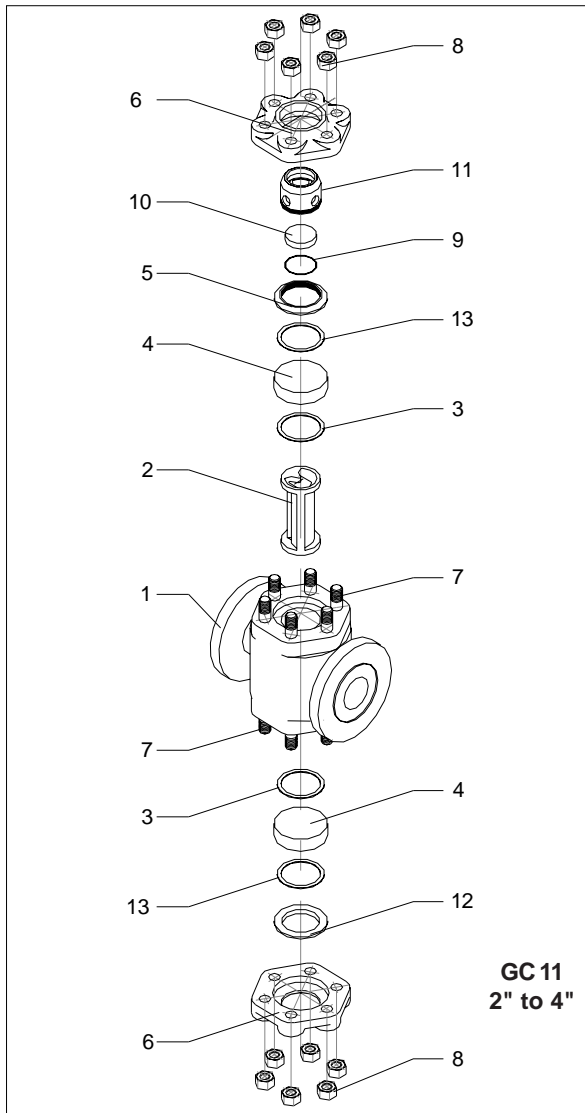
## Operating

On the siphon of the viewfinder the water stamp and the deflector wedge make the flow visible (pic.1). The edge C of the

deflector wedge is situated below the points A and B. The condensate is forced to go through the water stamp, while, the steam, because of its specific lowest weight, goes by over, compressing the condensate level to under. The pic. 2, 3 and 4 show the different situations found in the practice and indicate the behavior of the mounted steam trap the viewfinder downstream.

**Measures and weights**

Model	GC 11								
Nominal diameter	(mm)	15	20	25	40	50	65	80	100
	(pol)	1/2"	3/4"	1"	1.1/2"	2"	2.1/2"	3"	4"
Measure	(mm)								
	L	150	150	160	200	200	310	310	350
	B	164	164	164	230	230	285	285	350
	D (Crystal)	60	60	60	80	80	100	125	150
	S (Crystal)	10	10	10	15	15	15	20	25
Aprox. weight	(kg)	5,8	5,8	5,8	15,7	15,7	35	36	59
Model	GC 31								
Nominal diameter	(mm)	15	20	25	40	50			
	(pol)	1/2"	3/4"	1"	1.1/2"	2"			
Measures	(mm)								
	L <sub>1</sub>	150	150	160	200	200			
	B <sub>1</sub>	92	92	92	131	131			
	B <sub>2</sub>	82	82	82	115	115			
	D (Crystal)	60	60	60	80	80			
	S (Crystal)	15	15	15	20	20			
Aprox weight	(kg)	6,0	6,0	6,3	16,0	16,0			



GC 11		
Nº.	Description	Quant.
1	Body	01
2	Siphon	01
3	Gasket	04*
4	Crystal	02*
5	Conic ring	02
6	Fixation flange	02
7	Stud bolt	12
8	Nuts	12
GC 31		
Nº.	Description	Quant.
1	Body	01
2	Siphon	01
3	Gasket	02*
4	Crystal	02*
5	Conic ring	01
6	Fixation flange	02
7	Stud bolts	08
8	Nuts	08
9	Pressure ring	01
10	Protection glass	01*
11	Protection visor	01
12	Conical ring	01
13	Gasket	02

\* Recommended spare parts.

**Data for sizing**

ASCA will make pleasure the sizing. For this purpose must be supplied:

- Steam pressure
- Service temperature
- Local of using
- Flow direction (horizontal or vertical)

**Standard Especification**

Flow visors with siphon for control of condensate  
 Model GC..... from ASCA  
 Connections.....  
 As per norm.....  
 Pressure class.....  
 Nominal diameter.....  
 Optionals.....



We reserv the right of introducing fast modifications of technical order.

**ASCA EQUIPAMENTOS INDUSTRIAIS LTDA.**

202, Fernandes da Cunha Street Vigário Geral - Rio de Janeiro - RJ - COD 21241-300  
 Tel.: (21) 2472-6900 - Fax (21) 3014-7622 - e-mail: office@asca.com.br  
 homepage: http://www.asca.com.br