

DIN PN 16- 250 — DN 150 - 1370mm
ANSI 150 - 1500 — 4" - 54"

Application

It was developed for rapid access to pig launchers/receivers in petrochemical, onshore and offshore areas; it is also applicable to filters and autoclaves in the several industrial segments where easy access with safety and guarantee of tightness are indispensable requisites.

Main characteristics

SAFETY – it is guaranteed by the “locking plug” that blocks the eventual opening without the removal thereof and forces the repositioning thereof to restart the operation. A system of limited bleed warns the existence of pressure in the vessel.

TIGHTNESS – it is assured by the flatness and finishing of the sealing faces on the boss and cover, by the sealing ring and the multiple wedges that guarantee the uniform distribution of pressure of the cover over the seating boss.

QUICKNESS – the ASCA closing system by means of sliding wedges with single drive for opening and lifting the cover provides a quick, safe and smooth operation thanks to the perfect sizing of the design and manufacturing quality of the components. It also guarantees the impossibility of locking and consequent blocking of the cover.

Presentation

Considering the industrial needs, the quick covers ASCA are offered in the versions below.

VERTICAL

They are applied to vessels/filters mounted in the vertical position. They are provided with “Davit” allowing lifting and lateral rotation to permit access to the inside of the vessel or removal of the filtering element(s).

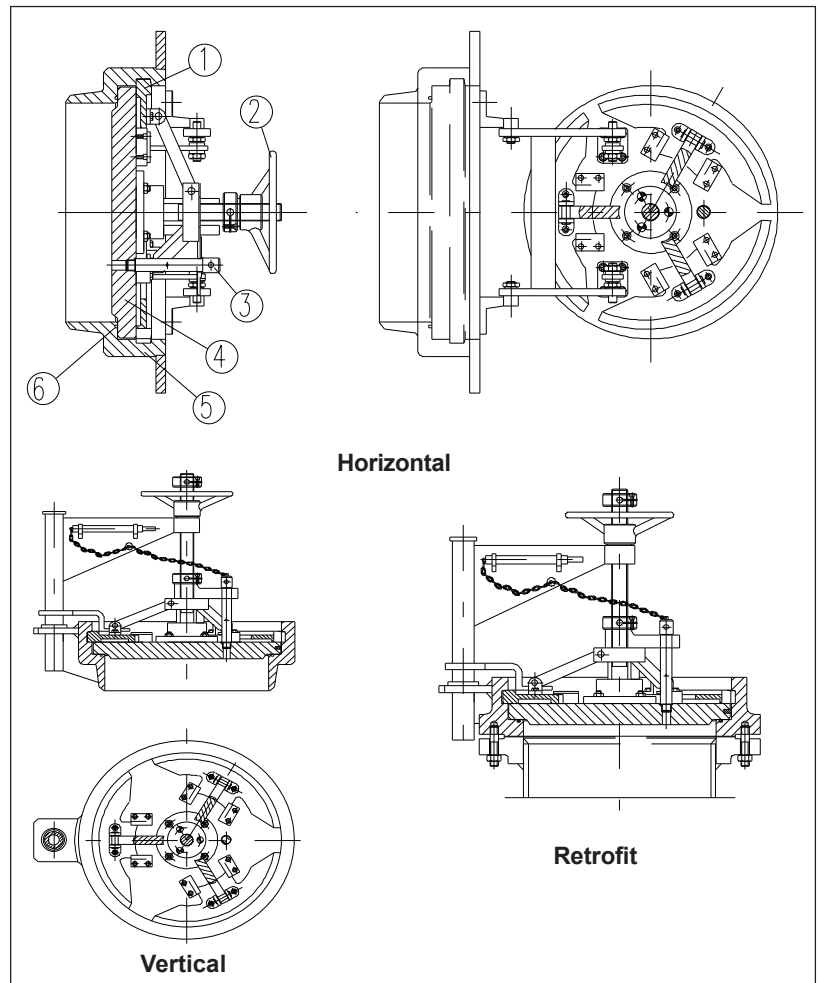
Note: the vertical covers ND greater than 30” are supplied upon request, however, without the “Davit” replaced by “Eye plate” for lifting by external means.

This is necessary due to the weight of the covers from this diameter on.

HORIZONTAL

They are suitable for installation in “Pig” launching and receiving systems in the horizontal position, have cover holder mounted to a rigid double pivoting system with permanent lubrication bearings and position adjustment to guarantee the perfect fit to the boss.

The design also permits assembly with right or left opening.



Techninal competence, materials and connections

Model				FR
Materials	N°	Description	Qty.	Specification
	1	Wedge	3**	Carbon steel
	2	Hand wheel	1	Carbon steel
	3	Bud vent screw	1	Stainless steel
	4	Door	1	ASTM A 516 Gr 70
	5	External ring	1	ASTM A 105
6*	O' ring seal	1	NBR (other since to 220°C)	

* Recommended spare parts

**Accerding to ND

RETROFIT

They were developed with the aim of easily replacing the blind covers (Blind ANSI B.16.5), whose opening/closing operation is slow and difficult to perform. They have all the characteristics of vertical and horizontal covers, including davit for lifting. The fastening base thereof is adapted to the existing flange in the vessel and has threads compatible with ANSI B16.5, ANSI B16.47 and DIN standards. Furthermore, they incorporate stud bolts

for fastening, not requiring previous preparation or modification.

Specification

DESIGN:

It complies with the standards required by the oil and gas industry and it is in accordance with standards BS 5500 and ASME VIII-Div 1-UG35-2.

SIZING AND PRESSURE

ND 4" to ND 54" is adequate for welding (Welding neck ANSI B16.5) in several vessels in classes ANSI #150 to #1500 (see tables attached)

QUALIFICATION

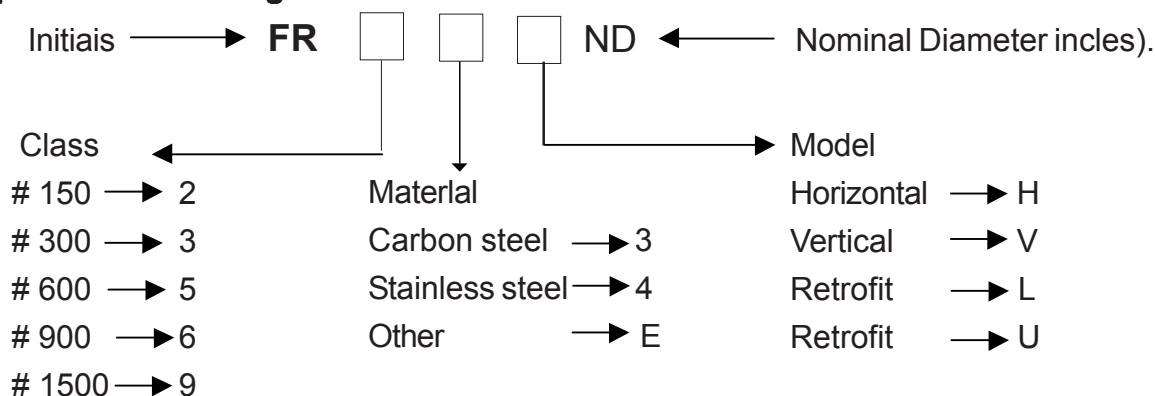
The whole manufacturing process, as well as the checking of the specifications, is in compliance with ISO 9001/2000 and ASME VIII Div. 1.

MATERIALS:

- Boss – forged steel ASTM A 105
- Covers – laminated steel ASTM A 516 Gr 70 in standard line
- Mechanical components – carbon steel with anti-corrosion galvanic lining
- Sealing ring – nitrile rubber in standard line, Viton, Polyurethane and others may be supplied for a temperature range up to 220°C

Note: ASCA quick opening closure may be supplied in other materials including stainless duplex as well as with all the required treatments to provide the reliability inherent to each type of application place.

Description for ordering



Example: Quick opening closure, class # 600, carbon steel, Vertical model DN 24" - **Description: FR 53 V 24**

ASCA EQUIPAMENTOS INDUSTRIAIS LTDA.

R. Fernandes da Cunha, 202- Vigário Geral - Rio de Janeiro - RJ - Brazil
CEP 21241-300 - Tel.: (21) 2472-6900 - Fax (21) 3014-7622
e-mail: office@asca.com.br - homepage: http://www.asca.com.br

SPECIFICATIONS SUBJECT TO CHANGE WITHOUT NOTICE.



Ask for certified print for exact dimensions